



SensiWatch™ Vision

Business reputations are built on meeting customers' expectations. Poor on-time delivery can quickly erode years of superior service, and negatively impact revenue and growth. Take charge through real-time visibility. Actionable alerts enable proactive communication of delays and schedule changes. Improved logistics performance drives speed, efficiency, and superior customer service for every shipment.

The **SensiWatch™ Vision** solution is designed to deliver **quick and comprehensive views** into a global supply chain. Implementing SensiWatch™ Vision can improve on-time delivery, improve communication between customers and partners, lower costs, and drive continuous supply chain optimization.

Easy-to-use **VizComm™ View** tracker monitoring devices are placed directly with the cargo to provide real-time updates on location and shipment status. **Secure, web-based tracking**, along with **automated alert messaging**, warn of delays or extended stops, and enable shippers to proactively manage every load. Alerts and location data can be **integrated with transport management and planning systems** to leverage existing technology and processes.

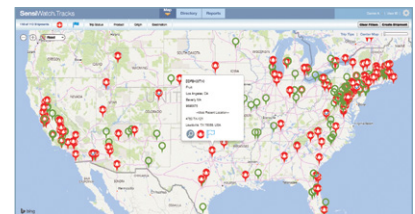
- Eliminate bottlenecks in the supply chain
- Improve compliance
- Increase on-time deliveries
- Evaluate carrier and 3PL performance
- Proactively communicate delays and schedule changes

SensiWatch Vision comes with support from the SensiWatch operations team, providing years of global cargo monitoring experience. **Post-shipment reports** are provided that **evaluate performance by lane and by carrier**, delivering valuable insight into key performance indicators (KPIs) across all shipments. Having a **full audit trail** of each shipment makes operational reviews more productive and efficient, removing any questions of responsibility.

The SensiWatch Vision solution offers a proactive way to **monitor, evaluate, and respond to unforeseen logistics issues** as they happen. Companies can now easily access reliable, over-the-road data to quickly adapt logistics strategies as landscapes shift, diminishing the risks associated with disruptions and change.

SensiWatch Vision Services

- Easy-to-implement, single-use, monitoring device
- Secure, web-based tracking application
- Automated alerts: delays, extended stops, late arrivals
- Actionable reporting: shipment summary; carrier and lane performance
- Integration with Transport Management Systems (TMS), Enterprise Resource Planning (ERP), and on-board telematics data



Sensitech Inc. is focused on delivering supply chain visibility solutions that track, monitor and protect products for global leaders in the food, life sciences, consumer goods, and industrial markets. Our solutions are focused in three key areas: quality and compliance, supply chain security, and logistics performance management. Quality and compliance solutions address temperature-sensitive, complex supply chains focused on delivering the highest quality possible, while our supply chain security solutions help to mitigate risks associated with theft, diversion and chain of custody. Sensitech's logistics performance solutions deliver origin-to-destination, real-time transparency to any in-transit journey. Sensitech Inc. is an ISO 9001:2008 company, headquartered in Beverly, Mass., with more than 35 sales, service and distribution locations around the world. Sensitech is a part of UTC Climate, Controls & Security, a unit of United Technologies Corp., a leading provider to the aerospace and building systems industries worldwide. Visit www.sensitech.com for additional information. © 2018 Sensitech Inc. All Rights Reserved. Unless otherwise indicated, all trademarks and service marks are the property of Sensitech Inc.